



ENGINEERED  
FOR THE  
OUTDOORS

## ESSENTIALS DECKING SPECIFICATION



RECYCLED MATERIALS  
100% QUALITY INSPECTED

SPLINTER FREE  
LOW MAINTENANCE

BRITISH DESIGN  
FIRE-RESISTANT OPTIONS

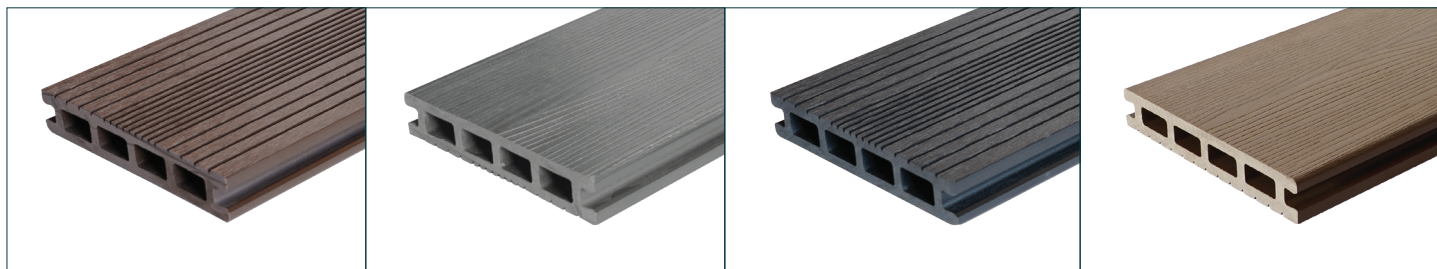
ANTI-SLIP

SUBFRAME • **DECKING** • FENCING  
GATES • BALUSTRADE • FIRE RATED OPTIONS

Scan here to  
find out more



# ESSENTIALS DECKING SPECIFICATION



Board Length	3.6m
Board Width	137mm
Board Depth	23mm
Board Finish	Wood grain & Grooved reverse
Board Weight	8.8kg per board
Board Coverage	0.493sqm
Available Colours	Coffee, Grey, Charcoal & Driftwood
Square Edge Board	Yes
Hidden Fastening System	Yes
Material	WPC
Matching Trim	Saige contemporary trim (2.2m x 70mm x 10mm) & Saige contemporary solid boards (3.6mx 143mm x 23mm)
Board Gap	3mm - refer to Saige hollow installation guide
Application	Domestic use only
Flexural Strength	See test reports
Anti slip Groove side BS7976-2/2002+A1: 2013 (Pendulum Test)	Wet: 61 Dry: 86 (Slip potential = Low)
Anti slip Wood grain side BS7976-2/2002+A1: 2013 (Pendulum Test)	Wet: 42 Dry: 82 (Slip potential = Low)
Warranty	10 years limited warranty



## FIXINGS

Stainless Steel  
Fixing Clips for Hollow Decking

## LAID DECKING MEASUREMENTS

### HOLLOW

Install Temperatures (degrees centigrade)	Expansion Gaps Required (end to end)
0-10	6mm
11-15	5mm
16-20	4mm
21-25	3mm
26+	2mm

## COMPOSITE MIX

Approximately 90% recycled materials consisting of around 60% recycled wood fibres, 30% recycled plastic and 10% toxin free additives including colour and UV stabilisers.

COFFEE

GREY

CHARCOAL

DRIFTWOOD