



ENGINEERED  
FOR THE  
OUTDOORS

## FENCING SPECIFICATION



RECYCLED MATERIALS  
100% QUALITY INSPECTED

SPLINTER FREE  
LOW MAINTENANCE

BRITISH DESIGN  
FIRE-RESISTANT OPTIONS

ANTI-SLIP

SUBFRAME • DECKING • FENCING  
GATES • BALUSTRADE • FIRE RATED OPTIONS

Scan here to  
find out more

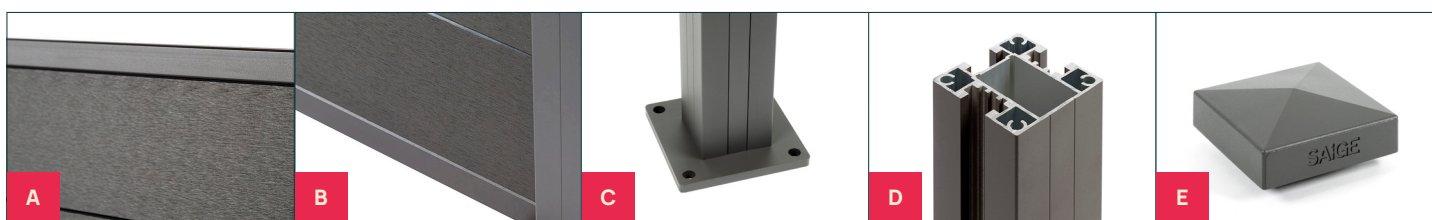


# FENCING SPECIFICATION



<b>Panel Size</b>	1755mm (working to a 1.8m centre)	<b>Colours</b>	Coffee, Grey, Charcoal & Driftwood*
<b>Individual board dimension</b>	1755mm x 145mm x 19.5mm	<b>Fence Panel Options</b>	1.8m (6ft) and 1.22m (4ft)
<b>Panel Finish</b>	Lightly Brushed	<b>Material</b>	WPC Inserts, Aluminium Posts and Rails
<b>Panel Weight</b>	3.85kg per board	<b>Use</b>	Domestic and Commercial
<b>Wind resistance</b>	Tested to gale force 9 winds		

\*to match our Contemporary Decking colours



## FIXINGS AND ACCESSORIES

<b>A</b>	<b>Top Bar</b>	1.748m x 30mm x 20mm	Powder Coated Aluminium RAL 7022
<b>B</b>	<b>Bottom Bar</b>	1.748m x 30mm x 20mm	Powder Coated Aluminium RAL 7022
<b>A/B</b>	<b>Composite fence boards</b>	1.8m (6ft) x 12 boards per bay and 1.22m (4ft) x 8 boards per bay	
<b>C</b>	<b>Base Plate</b>	10mm x 130mm x 130mm	Powder Coated Stainless Steel RAL 7022
<b>D</b>	<b>Post Sizes Available</b>	2.4m x 70mm x 70mm 1.8m x 70mm x 70mm 1.54m x 70mm x 70mm	Includes post cap and inserts - 1.815m, 55mm and 20mm Includes post cap and inserts - 1.815m, 55mm and 20mm Includes post cap and inserts - 1.54m, 55mm and 20mm
<b>E</b>	<b>Post Cap</b>	Additional post caps are available if required - to cover 70mm x 70mm post	Zinc Dye Cast RAL 7022

## COMPOSITE MIX

Approximately 90% recycled materials consisting of around 60% recycled wood fibres, 30% recycled plastic and 10% toxin free additives including colour and UV stabilisers.

COFFEE

GREY

CHARCOAL

DRIFTWOOD